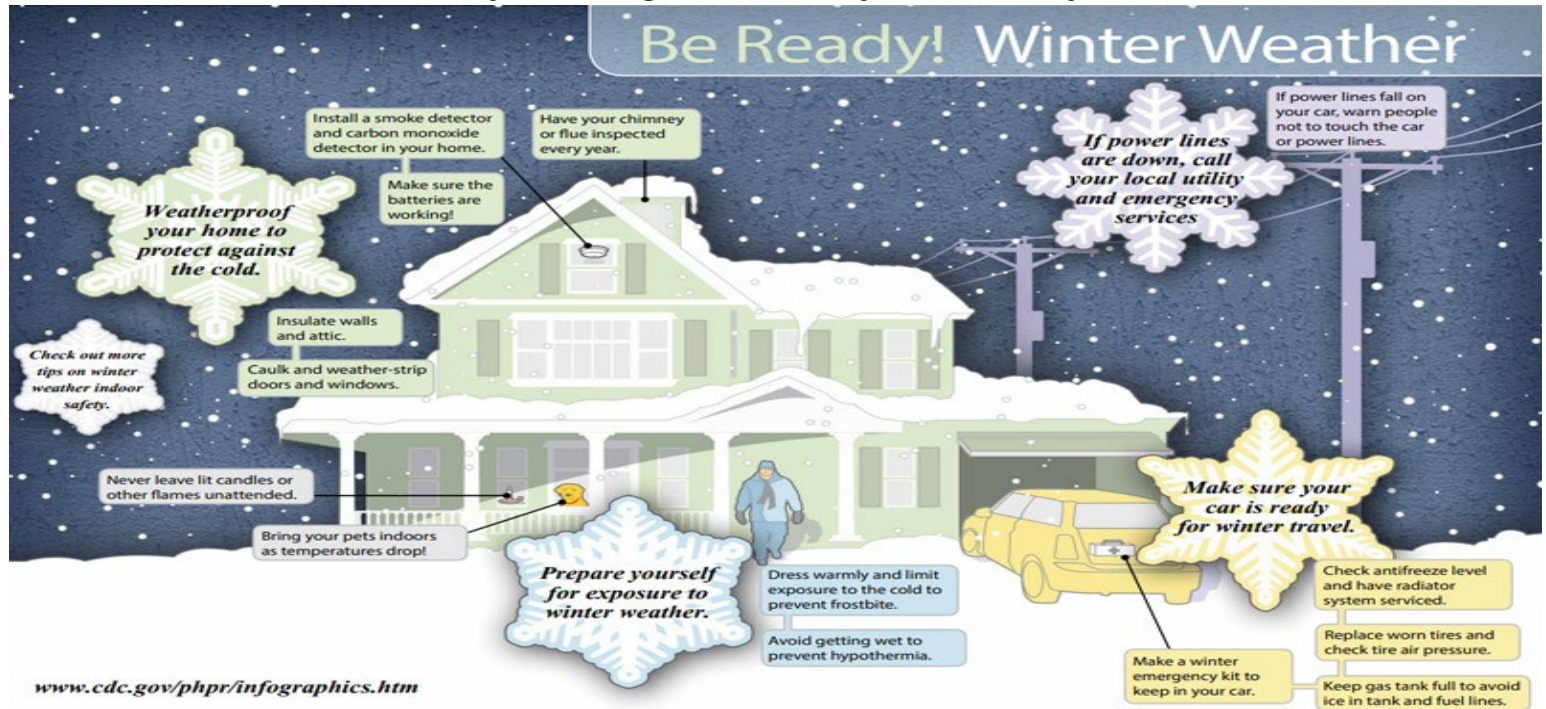


It's that time of year again, are you ready for the snow?



**The U.S. Consumer Product Safety Commission (CPSC)** wants you and your family to be safe using snow blowers/throwers. Each year, reports of lacerations, fractures, and finger amputations, related to the use of snow blowers occur and require emergency and hospital intervention.



Follow these recommendations to avoid accidents:

- **STOP THE ENGINE** before clearing clogged snow and debris from the machine.
- **DO NOT USE YOUR HANDS OR FEET** near the moving parts or to unclog the machine.
- **NEVER LEAVE THE MACHINE RUNNING** in an enclosed area.
- **ADD FUEL OUTDOORS**, away from ignition sources, after the engine has been turned off.
- **LEAVE IN PLACE, AND USE**, all safety guards, shields, and devices.
- **PROTECT YOUR EYES** with goggles or safety glasses.
- **WEAR THE RIGHT CLOTHES** to stay warm and dry and check the treads on your boots.



## Avoiding Winter Slips and Falls



**Snowy and icy** conditions can lead to serious injuries from slips and falls, consider these recommendations to prevent a tumble this winter.

- Check your footwear, avoid plastic or leather-soled shoes or boots.
- Use extra caution to get in and out of vehicles.
- Take small steps and keep your hands out of your pockets for balance.
- Wipe your shoes when you enter a building.
- Look ahead to avoid hazards.
- Use handrails and holds.

# Safety Focused

## Did you know?

Under the OSH Act's general duty clause, employers have a duty to protect workers from recognized serious hazards in the workplace, including hazards associated with snow removal from roofs. The information provided below describes the steps you can take to prevent injuries and deaths from snow removal hazards.



### Plan Ahead for Safe Snow Removal from Roofs

Before snow starts to accumulate, think about what will be needed to safely remove snow from roofs or other elevated surfaces:

- Can snow be removed without workers going onto the roof?
- Are there any hazards on the roof that might become hidden by the snow and need to be marked so that workers can see them (skylights, roof drains, vents, etc.)?
- How should the snow be removed, based on the building's layout, to prevent unbalanced loading?
- What are the maximum load limits of the roof and how do they compare with the estimated total weight of snow, snow-removal equipment, and workers on the roof?
- What tools, equipment, protective devices, clothing and footwear will workers need?
- What type of fall protection will be used to protect workers on roofs and other elevated surfaces?
- What training will workers need to work safely?
- How will mechanized snow removal equipment be safely elevated to the roof?
- How will you protect people on the ground from snow and ice falling off the roof during removal operations?

The National Highway Traffic Safety Administration reminds us that car seats and boosters protect children and infants from their leading cause of death. Do you have all the information you need to keep your young passengers safe if you are in a crash?

### Delaware's Child Restraint Law requires:

- Children under age 2 AND 30 pounds to ride in a rear-facing car seat
- Children under age 4 AND 40 Pounds to ride in a harnessed car seat
- Children under age 4 AND 40 pounds to ride in a harnessed car seat

Use the website listed below to find resources to help you find the right seat, guides for installation and use, and car seat fitting stations in each of our three counties.

Go to the Delaware Office of Highway Safety webpage at: <https://ohs.delaware.gov/carseat.shtml>

The ICO conducts monthly webinars on various safety topics open to all employees.

If you have a topic that you would like to see covered in 2026, please send your recommendation to the Insurance Coverage Office mailbox at: [INSCOV@DELAWARE.GOV](mailto:INSCOV@DELAWARE.GOV)

Go to OSHA for more winter hazard information:  
<https://www.osha.gov/winter-weather/hazards>

**E**  
F P  
T O Z  
L P E D  
P E C F D  
E D F C Z P

**Focus on Safety  
in 2026**

