

NOTE: Contains information intended for benefit-eligible State Agency, K12 (School District and Charter School), DTCC and DSU employees.



November 7, 2017
Issue

e - Newsletter

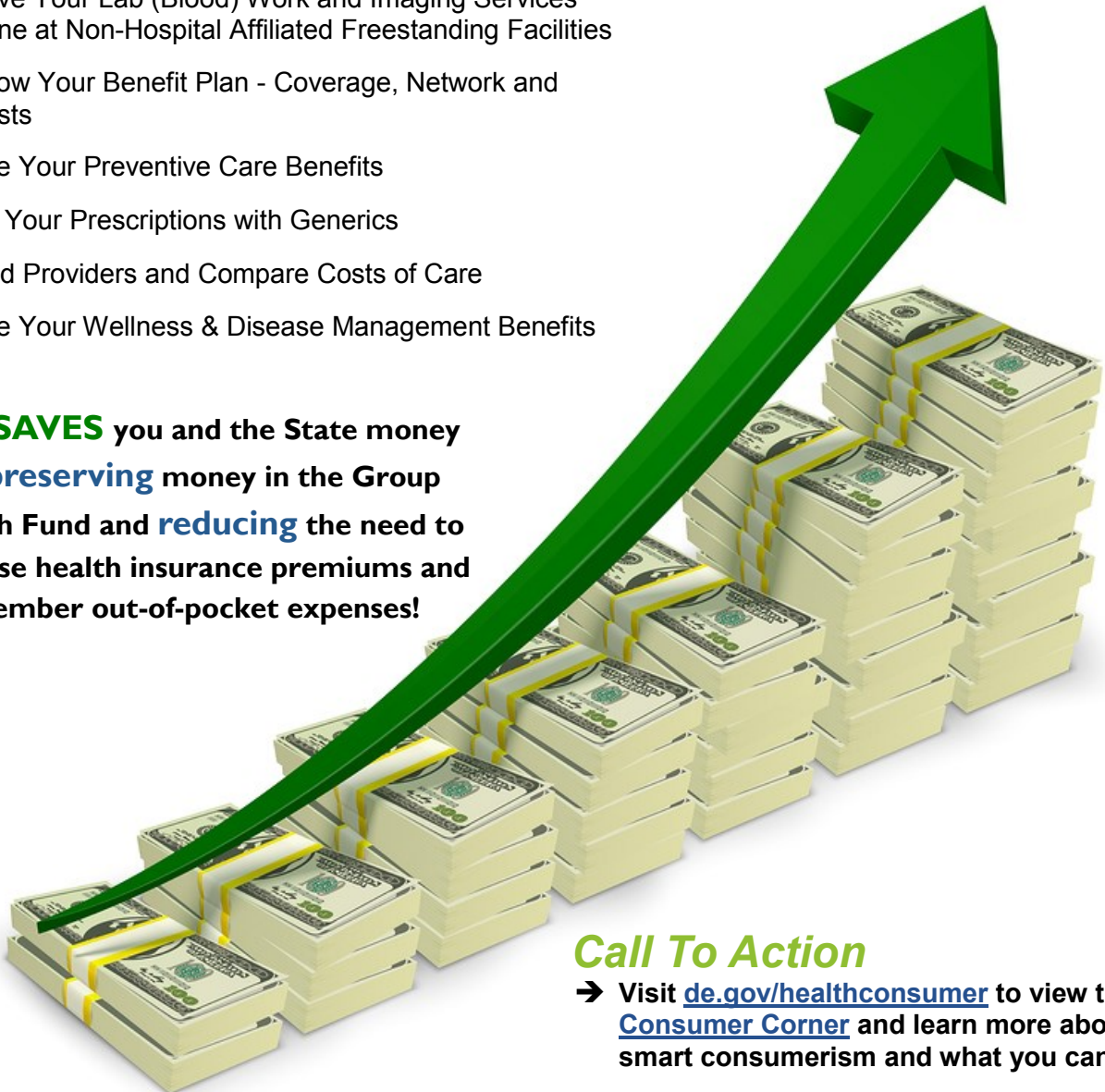
YOU Are Part of the Solution

We Need Your Help:

- Use Emergency Rooms Only for Emergencies
- Have Your Lab (Blood) Work and Imaging Services Done at Non-Hospital Affiliated Freestanding Facilities
- Know Your Benefit Plan - Coverage, Network and Costs
- Use Your Preventive Care Benefits
- Fill Your Prescriptions with Generics
- Find Providers and Compare Costs of Care
- Use Your Wellness & Disease Management Benefits

This **SAVES** you and the State money by **preserving** money in the Group Health Fund and **reducing** the need to increase health insurance premiums and member out-of-pocket expenses!

One of the biggest challenges the State of Delaware faces is the **increasing cost of health care** for employees, pensioners and their family members. Skyrocketing costs mean **less money** for pay increases, improving our schools, protecting our environment and making our neighborhoods safer.



Call To Action

→ Visit de.gov/healthconsumer to view the **Consumer Corner** and learn more about smart consumerism and what you can do.

This newsletter is published by the State of Delaware Statewide Benefits Office.

To view other SBO e-Newsletters, visit
<http://ben.omb.delaware.gov/communication.shtml>.