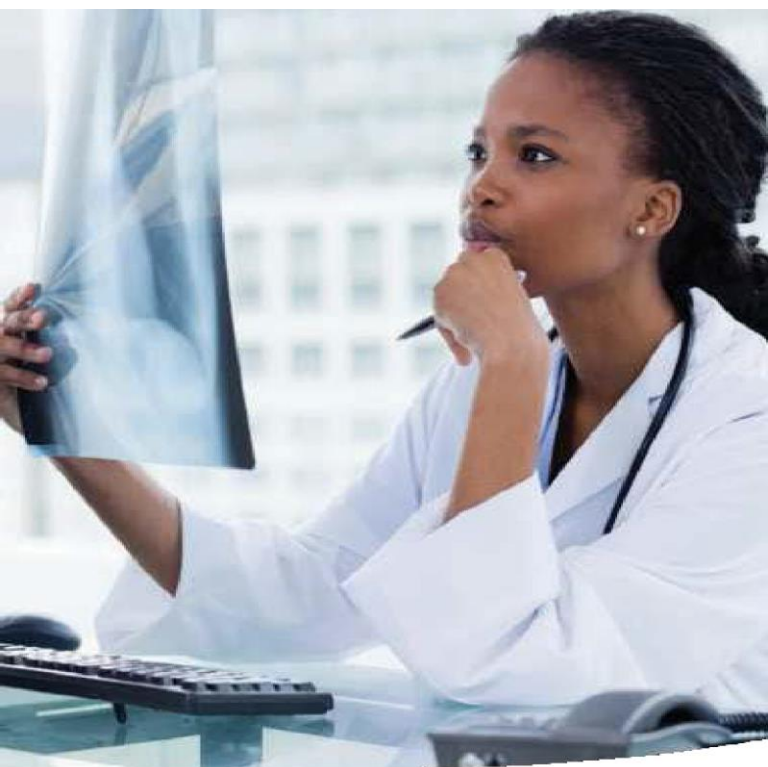


Network Imaging Centers Near You



Where You Go for Care Matters

When your doctor orders an X-ray, MRI, CT scan, ultrasound, or other radiology/imaging service, consider using a nonhospital-affiliated freestanding imaging center instead of a hospital-affiliated center. These centers offer you quality care and may save you time and money, too.

Confirm Network Participation

Before scheduling or getting your service, be sure to confirm that the provider is in your plan's network:

- Call the Member Service number on your Highmark Delaware ID card.
- Log in to your member website at **highmarkbcbsde.com**. Then select the **Find a Doctor** tab to begin a search.

Network Imaging Centers

The following providers are listed in alphabetical order. Information is current as of October 2022. For more providers or to confirm network participation, contact Member Service.

AKUMIN

2501 Silverside Road, Suite 2
Wilmington, DE 19810

302-246-2000

Basic and High-Tech Imaging/Radiology

AKUMIN

1010 North Bancroft Parkway, Suite 103
Wilmington, DE19805

302-472-5555

Basic and High-Tech Imaging/Radiology

AKUMIN

Sussex Professional Center
407 South DuPont Boulevard
Milford, DE 19963

302-424-0500

Basic and High-Tech Imaging/Radiology

AKUMIN

Omega Professional Center
H-42 Omega Drive
Newark, DE 19713

302-738-1700

High-Tech Imaging/Radiology

AKUMIN

3211-AConcord Pike
Wilmington, DE19803

302-479-5400

High-Tech Imaging/Radiology

AKUMIN

1 Centurian Drive, Suite 107
Newark, DE 19713

302-738-1700

High-Tech Imaging/Radiology

AKUMIN

Herring Run Professional Park
300 Health Services Drive, Suite 303
Seaford, DE 19973

302-628-3500

Basic and High-Tech Imaging/Radiology

AKUMIN

1030 Forrest Avenue, Suite 105A
Dover, DE 19904

302-734-5800

High-Tech Imaging/Radiology

AKUMIN

240 Beiser Boulevard, Suite 100
Dover, DE 19904

302-730-9300

Basic and High-Tech Imaging/Radiology

Ambient Medical Care LLC

24459 Sussex Highway
Seaford, DE 19973

302-629-3099

Aspirian Open MRI of Southern DE

34435 King Street Row, Suite 2
Lewes, DE 19958

302-644-7335

High-Tech Imaging/Radiology

Atlantic General Health Systems

96 Atlantic Ave, Suite 103
Ocean View, DE 19970

302-541-4460

Diagnostic Radiology

Bear MRI and Imaging Center LLC

101 Becks Wood Drive, Suite 103
Bear, DE 19701

302-834-4500

Basic and High-Tech Imaging/Radiology

AKUMIN

Delaware Diagnostic Imaging PA

2055 Limestone Road, Suite 104

Wilmington, DE 19808

302-633-6200

Basic and High-Tech Imaging/Radiology

Delaware Imaging Network

Newark Main Street
324 E. Main Street
Newark, DE 19711

302-738-5178

Basic Imaging

Delaware Imaging Network

210 South College Avenue
Laurel Hall, Room 215
Newark, DE 19716

302-831-8331

Basic Imaging

Delaware Imaging Network

1 Centurion Drive, Suite 106
Newark, DE 19713-2173

302-999-0993

Basic Imaging

Delaware Imaging Network

3206 Concord Pike
Wilmington, DE19803

302-654-5300

Basic and High-Tech Imaging/Radiology

Delaware Imaging Network

3401 Brandywine Parkway, Suite 102
Wilmington, DE19803

302-533-2160

Basic and High-Tech Imaging/Radiology

Delaware Imaging Network

2600 Glasgow Avenue, Suite 122
Newark, DE 19702

302-832-5590

Basic and High-Tech Imaging/Radiology

Delaware Imaging Network

120 Sandhill Drive, Suite 2
Middletown, DE 19709

302-449-5400

Basic and High-Tech Imaging/Radiology

Delaware Imaging Network

L-6, Omega Drive
Newark, DE 19713

302-369-4342

Basic Imaging

Delaware Imaging Network

Pike Creek Sports Medicine Center
3105 Limestone Road, Suite 106
Wilmington, DE 19808

302-995-2037

Basic and High-Tech Imaging/Radiology

Delaware Imaging Network

40 Polly Drummond Hill Road, Building 4
Newark, DE 19711

302-737-5990

Basic and High-Tech Imaging/Radiology

Delaware Imaging Network

Omega Professional Center

J24 Omega Drive

Newark, DE 19713

302-738-9100

Basic Imaging/Radiology

First State Imaging Center

1000 Twin C Lane, Suite 100

Newark, DE 19713

302-731-2888 x1620

High-Tech Imaging/Radiology

Limestone Open MRI and Imaging Center

2060 Limestone Road, Suite 202

Wilmington, DE 19808

302-246-2001

Basic and High-Tech Imaging/Radiology

Mid-Delaware Imaging

302-999-9729

710 S. Queen Street

Dover, DE 19904

Basic and High-Tech Imaging/Radiology/Nuclear Medicine

Ocean Medical Imaging of Delaware Inc.

Milton Medical Park

611 Federal Street

Milton, DE 19968

302-684-5151

Basic and High-Tech Imaging/Radiology

Ultrasound Express

21 West Clark Ave, Suite 1620 Milford,
DE 19963

302-422-2612

Diagnostic Ultrasounds

Delaware Imaging Network

1020 North Union Street,
Wilmington, DE 19805

302-424-9855

Diagnostic Radiology

MobilexUSA

1109 Middleford Rd, Suite A
Seaford, DE 19973

302-628-9433

Diagnostic Radiology

Limestone Open MRI and Imaging Center

1306 South Dupont Highway,
Dover, DE 19901

302-246-2001

Basic and High-Tech Imaging/Radiology

Limestone Open MRI and Imaging Center

374 East Main St.,
Middletown, DE 19709

302-246-2001

Basic and High-Tech Imaging/Radiology

Open MRI & Imaging at Principio

4863 Pulaski Hwy, Suite 100
Perryville, MD 21903

410-642-3014

Basic and High-Tech Imaging/Radiology

Open MRI and Imaging Center of Elkton LLC

301 Augustine Herman Highway, Suite A
Elkton, MD 21921

410-620-1900

Basic and High-Tech Imaging/Radiology

Peninsula Imaging LLC

Woodbrooke Medical Complex
1655 Woodbrooke Drive, Suite 101
Salisbury, MD 21804

410-749-1123

Basic and High-Tech Imaging/Radiology

First State Imaging Center

285 Beiser Boulevard, Suite 101
Dover, DE 19904

302-731-2888

Radiology

First State Imaging Center

12100 Black Swan Drive, Suite 101
Lewes, DE 19958

302-644-3311

Radiology

Southern Delaware Imaging LLC

424 Savannah Road
Lewes, DE 19958

302-645-3300

Radiology
