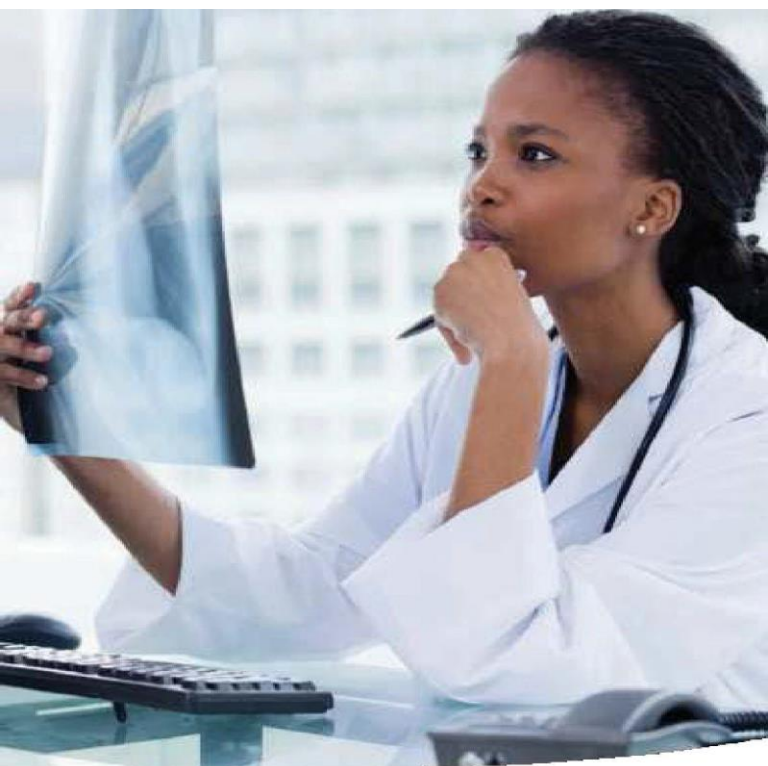


Network Imaging Centers Near You



Where You Go for Care Matters

When your doctor orders an X-ray, MRI, CT scan, ultrasound, or other radiology/imaging service, consider using a non-hospital affiliated freestanding imaging center instead of a hospital affiliated center. These centers offer you quality care and may save you time and money, too.

Confirm Network Participation

Before scheduling your service, please be sure to confirm that the provider is in your plan's network:

- Call the Member Service number on your Highmark Delaware ID card.
- Log in to your member website at **myhighmark.com**. Then select the **Find a Doctor** tab to begin a search.

Network Imaging Centers

Information is current as of October 2024. For more providers or to confirm network participation, contact Member Services at the number on the back of your ID card.

Ambient Medical Care LLC	302-629-3099
---------------------------------	---------------------

24459 Sussex Highway, Suite 2
Seaford, DE 19973

Basic and High-Tech
Imaging/Radiology/Nuclear Medicine

Bear MRI and Imaging Center LLC	302-834-4500
--	---------------------

101 Becks Wood Drive, Suite 103
Bear, DE 19701

Mammography only

Delaware Imaging Network	877-990-2121
---------------------------------	---------------------

2055 Limestone Rd
Suite 104
Wilmington, DE 19808

Delaware Imaging Network	302-449-5400
---------------------------------	---------------------

120 Sandhill Drive, Suite 2
Middletown, DE 19709

Basic and High-Tech Imaging/Radiology

Delaware Imaging Network	302-654-5300
---------------------------------	---------------------

3206 Concord Pike
Wilmington, DE 19803

Basic and High-Tech Imaging/Radiology

Delaware Imaging Network	302-369-4342
---------------------------------	---------------------

L-6, Omega Drive
Newark, DE 19713

Basic and High-Tech Imaging/Radiology

Delaware Imaging Network	302-737-5990
---------------------------------	---------------------

40 Polly Drummond Hill Road, Building 4
Newark, DE 19711

Basic and High-Tech Imaging/Radiology

Delaware Imaging Network	302-738-9100
---------------------------------	---------------------

Omega Professional Center
J24-26 Omega Drive
Newark, DE 19713

Basic Imaging/Radiology

Delaware Imaging Network	302-832-5590
---------------------------------	---------------------

2600 Glasgow Ave.
Suite 122
Newark, DE 19702

Basic and High-Tech Imaging/Radiology

Delaware Imaging Network	302-734-4988
---------------------------------	---------------------

710 S. Queen Street Dover,
DE 19904

Basic and High-Tech
Imaging/Radiology/Nuclear Medicine

Delaware Imaging Network	302-553-2111
---------------------------------	---------------------

939 N DuPont Blvd Suite 140
Milford, DE 19963

Mammography only

First State Imaging Center	302-731-2888
-----------------------------------	---------------------

285 Beiser Boulevard, Suite 101
Dover, DE 19904

Radiology

First State Imaging Center	302-644-3311
-----------------------------------	---------------------

12100 Black Swan Drive, Suite 101
Lewes, DE 19958

Radiology

First State Imaging Center	302-731-2888
-----------------------------------	---------------------

1000 Twin C Lane, Suite 100
Newark, DE 19713

High-Tech Imaging/Radiology

Limestone Open MRI and Imaging Center	302-246-2001
--	---------------------

2060 Limestone Road, Suite 202
Wilmington, DE 19808

Basic and High-Tech Imaging/Radiology

Limestone Open MRI and Imaging Center

302-246-2001

374 East Main St.
Middletown, DE 19709

Basic and High-Tech Imaging/Radiology

Limestone Open MRI and Imaging Center

302-246-2001

1306 South Dupont Highway
Dover, DE 19901

Basic and High-Tech Imaging/Radiology

Ocean Medical Imaging of Delaware Inc.

302-684-5151

Milton Medical Park
611 Federal Street
Milton, DE 19968

Basic and High-Tech Imaging/Radiology

Peninsula Imaging LLC.

410-749-1123

Woodbrooke Medical
Complex
1655 Woodbrooke Drive
Suite 101
Salisbury, MD 21804

Basic and High-Tech Imaging/Radiology

Southern Delaware Imaging, LLC

302-645-3300

424 Savannah Road
Lewes, DE 19958

Radiology

Ultrasound Express

550 S DuPont Blvd., Suite A
Milford, DE 19963

Diagnostic Ultrasounds
