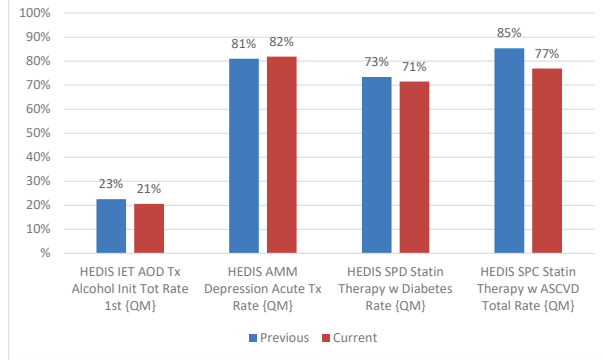


## Medical and Prescription Drug Dashboard - Early Retirees

Previous Period: Apr 2022 - Mar 2023 (Paid)

Current Period: Apr 2023 - Mar 2024 (Paid)

### 1. Quality Metrics



### 3. Well Care and Preventive Visits

	Previous	Current	Trend	Benchmark
Visits per 1000 Well Baby	4528.3	6000.0	32.5%	4916.1
Visits per 1000 Well Child	924.8	914.5	-1.1%	705.4
Visits per 1000 Prevent Adult	549.5	561.9	2.3%	456.1

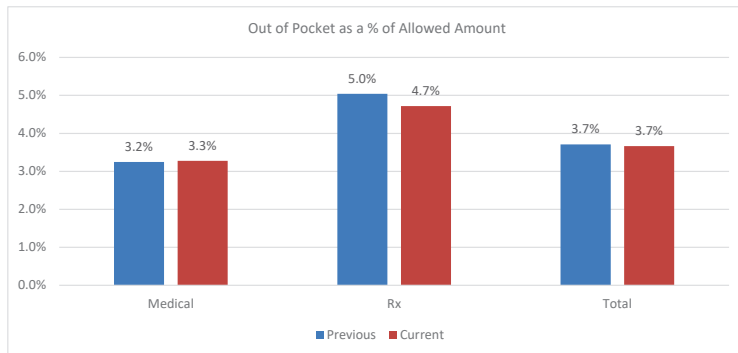
### 4. Medical Eligibility

	Previous	Current	Trend
Average Employees	6,074.6	5,917.5	-2.6%
Average Members	9,767.9	9,561.5	-2.1%
Family Size	1.6	1.6	0.0%
Member Age	49.9	49.8	-0.2%
Members % Male	42.0%	43.0%	2.4%

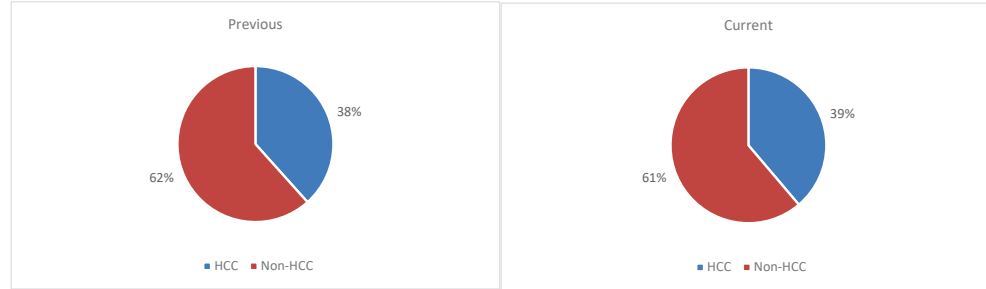
### 5. Risk Score

	Previous	Current
Member Risk Score	242.9	248.4

### 7. Cost Sharing



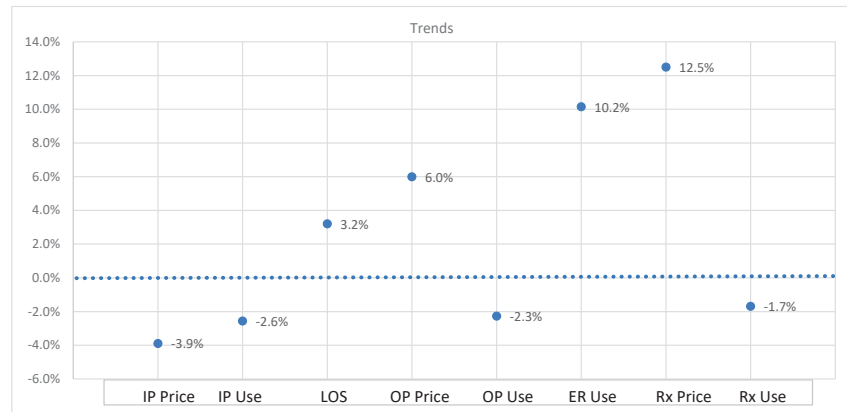
### 2. High Cost Claimants



	Previous	Current	Trend
Patients	268	286	6.7%
Patients per 1,000	27.4	29.9	9.0%
Payments (in Millions)	\$48 M	\$49 M	3.0%
Payments per Patient	177,318	171,089	-3.5%

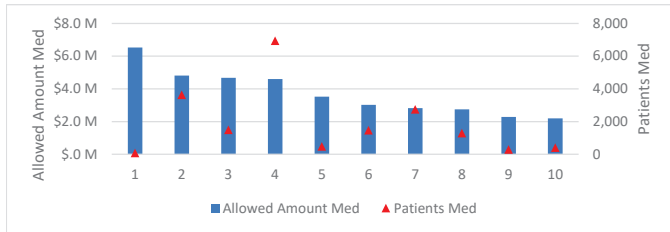
### 6. Price and Use

		Previous	Current	Trend	Benchmark
Inpatient	Allowed per Admit	\$42,440	\$40,787	-3.9%	\$36,806
	Admits per 1000	62.0	60.5	-2.6%	50.9
	Days LOS	6.9	7.1	3.2%	5.7
Outpatient	Allowed per Service	\$170	\$180	6.0%	\$140
	ER Visits per 1000	314.1	307.0	-2.3%	234.5
Non-Specialty Rx	Allowed per Days Supply	\$2	\$3	10.2%	n/a
	Days Supply PMPY	717	726	1.3%	n/a
Specialty Rx	Allowed per Days Supply	\$128	\$135	4.9%	n/a
	Days Supply PMPY	10	11	8.8%	n/a
All RX	Allowed per Days Supply	\$4	\$5	11.2%	\$5
	Days Supply PMPY	727	737	1.4%	657



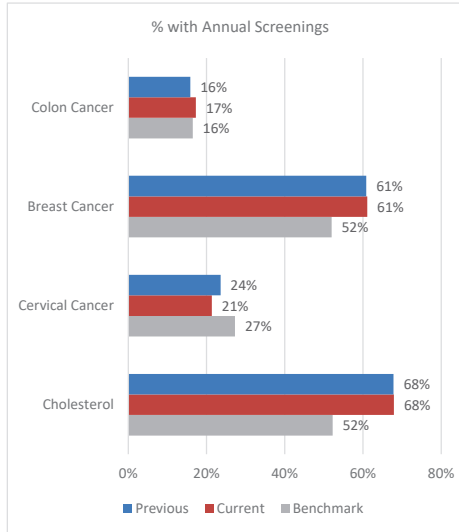
**Medical and Prescription Drug Dashboard - Early Retirees**  
**Previous Period: Apr 2022 - Mar 2023 (Paid)**  
**Current Period: Apr 2023 - Mar 2024 (Paid)**

**8. Top Medical Conditions (by cost)**

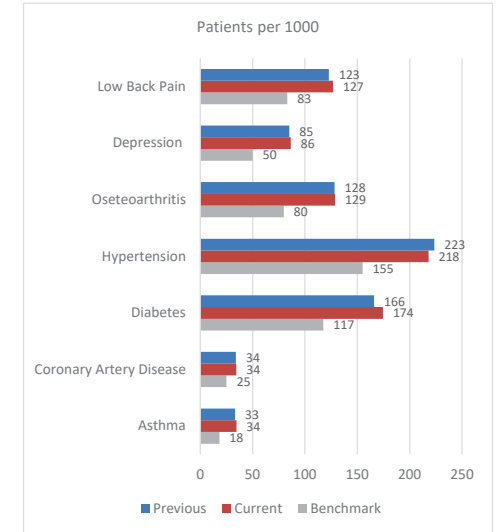


Condition	Allowed Amount Med	Patients Med	Med Allowed per Patient
1 Chemotherapy Encounters	\$6,534,949	73	\$89,520
2 Signs/Symptoms/Oth Cond, NEI	\$4,818,695	3,638	\$1,325
3 Osteoarthritis	\$4,673,812	1,489	\$3,139
4 Prevent/Admin Hlth Encounters	\$4,597,263	6,941	\$662
5 Cardiac Arrhythmias	\$3,520,706	476	\$7,396
6 Spinal/Back Disord, Low Back	\$3,023,661	1,465	\$2,064
7 Arthropathies/Joint Disord NEC	\$2,822,070	2,747	\$1,027
8 Respiratory Disord, NEC	\$2,750,483	1,297	\$2,121
9 Cerebrovascular Disease	\$2,279,567	293	\$7,780
10 Coronary Artery Disease	\$2,196,878	398	\$5,520

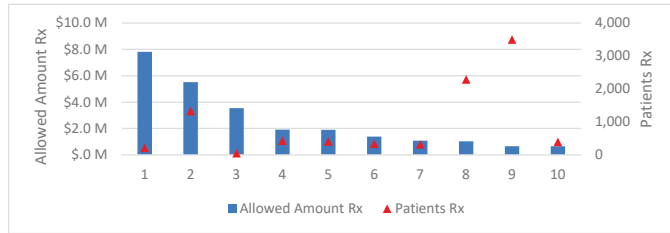
**9. Screening Rates**



**10. Chronic Condition Prevalence**



**11. Prescription Drug Metrics**



Therapeutic Class	Allowed Amount Rx	Patients Rx	Rx Allowed per Patient
1 Immunosuppressants, NEC	\$7,818,942	211	\$37,057
2 Antidiabetic Agents, Misc	\$5,511,866	1,330	\$4,144
3 Molecular Targeted Therapy	\$3,552,884	49	\$72,508
4 Antidiabetic Ag, SGLT Inhibitr	\$1,906,823	432	\$4,414
5 CNS Agents, Misc.	\$1,892,797	405	\$4,674
6 Antidiabetic Agents, Insulins	\$1,393,607	336	\$4,148
7 Coag/Anticoag, Anticoagulants	\$1,081,088	316	\$3,421
8 Adrenals & Comb, NEC	\$1,022,167	2,287	\$447
9 Antihyperlipidemic Drugs, NEC	\$660,767	3,501	\$189
10 Misc Therapeutic Agents, NEC	\$660,433	394	\$1,676

